

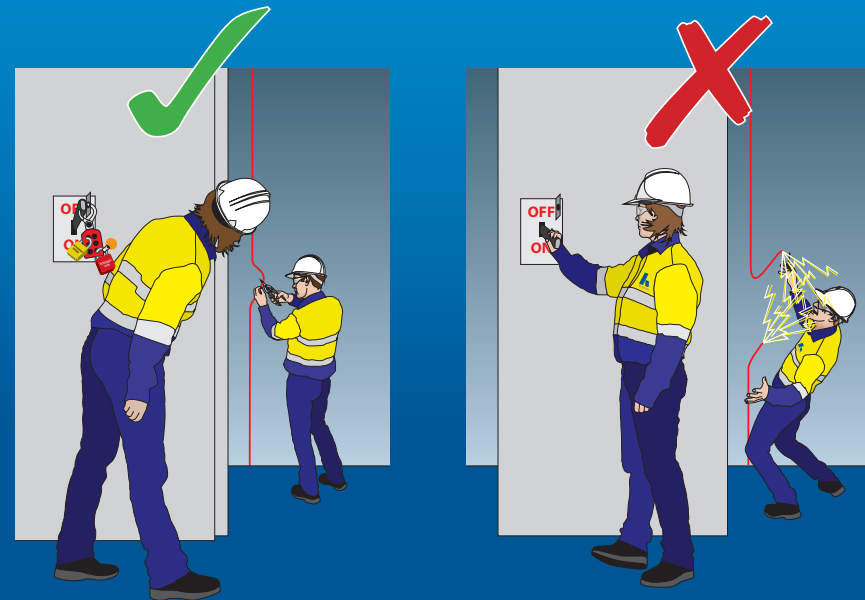


Electrical

- Isolate, lock out and tag out and prove de-energised before you start work
- Check your electrical equipment every time, before and after use – is it tested and tagged?
- Do not use defective cables, plugs, sockets, outlets or equipment with cracked casing
- Immediately report damaged equipment – take it out of service and tag it out
- Never repair electrical equipment yourself unless you are qualified
- Ensure equipment is properly connected, including the earth (use standardised procedures for earthing practices)
- Protect leads from damage and keep out of access ways to prevent trips
- Ensure control panels and switch rooms are locked to prevent inadvertent access



Electricity can turn YOU off!



PROUD TO BELONG
PROUD TO BE SAFE



PROUD TO BELONG
PROUD TO BE SAFE

