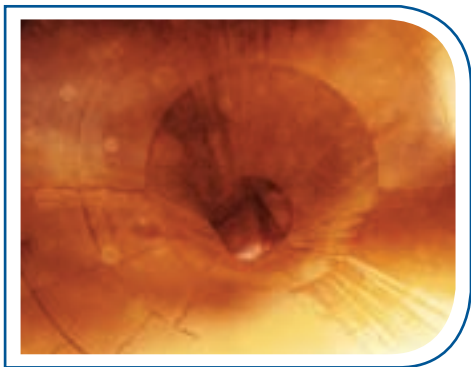


BRADKEN

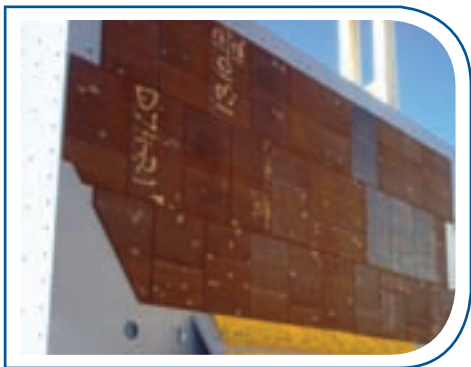
PRODUCT APPLICATIONS



Train loading bin



Inside the above loading bin



Screen house impact liners

Chute, Bin and Hopper Liners

Bradken has over 30 years experience in producing chromium carbide overlay products for the mining and processing sectors. Over that time, Bradken has distinguished itself as a market leader, providing quality wear resistant products.

Duaplate® and Vidaplate® are tough chromium carbide overlay plate that can withstand high impact and extreme abrasive environments. Long after steel plate has worn out, Duaplate and Vidaplate liners will show little sign of wear. This makes them the perfect material for chute, bin or hopper liners.

The key advantages when considering Bradken's Duaplate and Vidaplate, are the wide range of grades, our technical experience and ability to tailor solutions to suit varied operating environments. Bradken will enhance the life expectancy of the chute, bin or hopper by using a range of overlay grades and thickness to suit the demands of the application. Bradken will customise liner kits to meet the application requirement.

Smooth versions of our D60 and D80 Duaplate are available to minimise hang-up in the handling of materials such as coal. The smooth Duaplate grades offer low friction properties comparable to stainless steels whilst maintaining the fundamental wear resistant properties of the standard Duaplate grade.

Bradken has the experience, knowledge and facilities to design and manufacture wear packages for chute bin and hopper applications.

Vidaplate® duaplate®

BRADKEN

PRODUCT APPLICATIONS



Storage Hopper



Chute



The above chute shows little signs of wear after 6 months

Chute, Bin and Hopper Liners

The benefits of using Duaplate and Vidaplate:

- **Longer wear life:** Duaplate and Vidaplate have been proven to last 3-5 times longer than Q & T steel.
- **Reduced downtime:** Duaplate and Vidaplate applications require less maintenance. This leads to an increase in productivity.
- **Improved flow qualities:** Duaplate and Vidaplate have a low coefficient of friction providing more effective material flow and less hang-up.
- **Supplied as kit:** Duaplate and Vidaplate liners can be supplied as a kit or they can be attached to the hopper, bin or chute at one of Bradken's engineering workshops.
- **Easy to install:** Duaplate and Vidaplate liners kits require no field trimming and can be attached by either welding or studs.
- **Less welding:** Duaplate and Vidaplate liners are supplied as panels and require less welding compared to strip style liner kits.
- **Flexibility:** Duaplate and Vidaplate liner kits can be fabricated to meet individual customer requirements.
- **Adaptability:** Duaplate and Vidaplate are proven wear resistant choices that are available in a wide range of grades and thickness to suit a wide variety of operating conditions.

Vidaplate® **duaplate**®

For more information contact Bradken at wpbsales@bradken.com.au

3 BKM SP MKT
Rev. 0
Issue date – August 2007

170 Railway Parade Bassendean WA 6054 Australia
Tel: 61 8 9449 8300 Fax: 61 8 9449 8335
Web: www.bradken.com.au