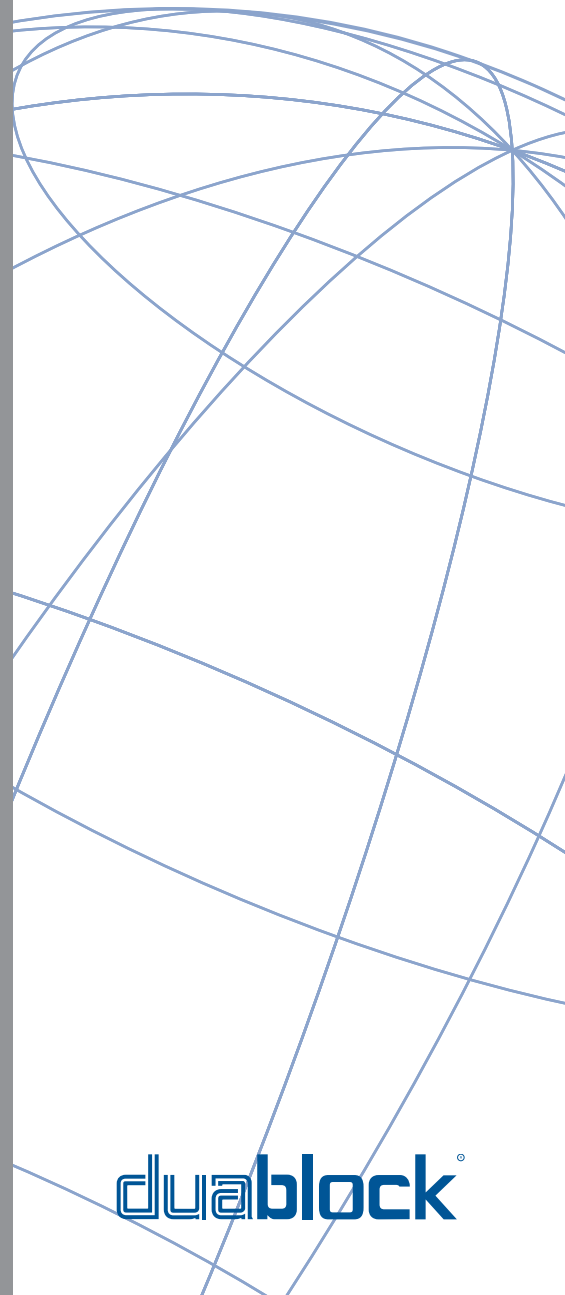


Wear Plate & Block

Duablock Products Catalogue



Our Innovation. Your Advantage.



duablock

duablock[®] products

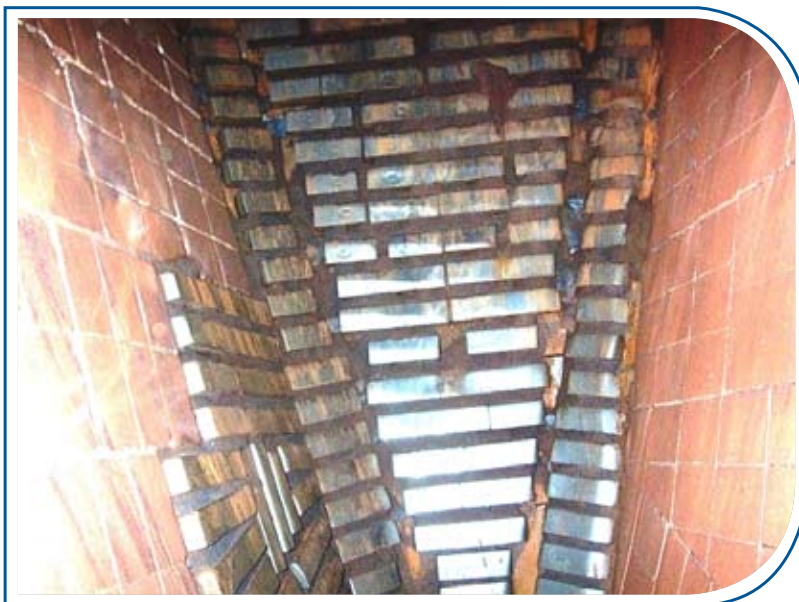
Bradken's Duablock products are a composite material comprising of a chromium-molybdenum, abrasion resistant, white iron casting, metallurgically bonded to a weldable mild steel backing plate. The white iron casting is a superior wear resistant product, containing hard chromium carbides, typically 1500HV, supported in a martensitic matrix.

The mild steel backing plate is vacuum brazed to the white iron casting, giving a true metallurgical bond. Other backing plates, such as stainless steel, can also be used to suit the operating environment.

The standard backing plate is machined flat for quick attachment by welding or Bradken can supply blocks fitted with studs for easy installation and removal. When welding the backing plate to a surface, no pre heating or post heating is required.

A wide variety of standard blocks are available, adapted for specific applications. However, Bradken's Duablock products can be custom designed to meet any situation regardless of size and shape concerns. Bradken can also supply cut and shaped blocks to be strategically placed on equipment so that a unique, high performance wear package can be created to maximise service life.

Bradken's Duablock products offer superior wear life compared to Q&T bars, manganese steel and chrome-molybdenum pearlitic steels.



Our Innovation. Your Advantage.

duablock[®] products



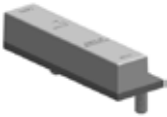
Duablock – wear bars offer excellent protection when used as tumble bars or when configured to form a rock-box. They are also used to provide protection to heavy earth moving machinery.



Duabutton – blocks are extensively used on heavy earth moving equipment, particular on mining and construction buckets and shovels.



Chokblock – bars are unique block products that can be formed and welded onto flat or curved surfaces. This allows Chokblocks to be used on a range of fixed plant and mobile equipment such as buckets and chute liners.



Microledge – blocks are attached to chutes to form micro-rock boxes, which virtually eliminates wear to the chute structure.



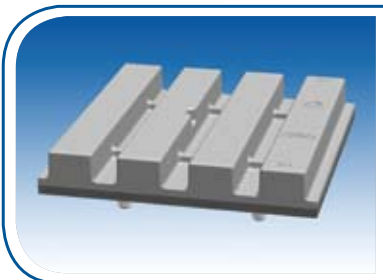
Skidblock – pads are used extensively to provide strategic protection on heavy earth moving equipment, particularly on mining and construction buckets and shovels.



Duatrap – liners are used to create a rock-box effect on fixed plant applications such as chutes and impact walls.



Grizzlybar – cappings used to protect grizzly fingers.

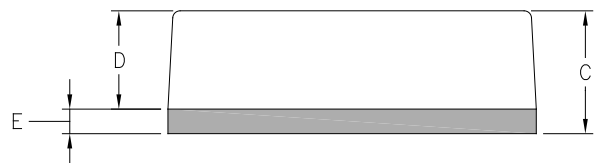
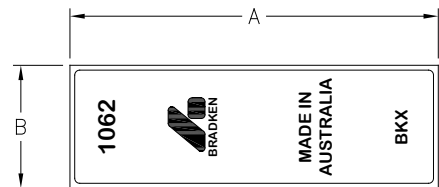
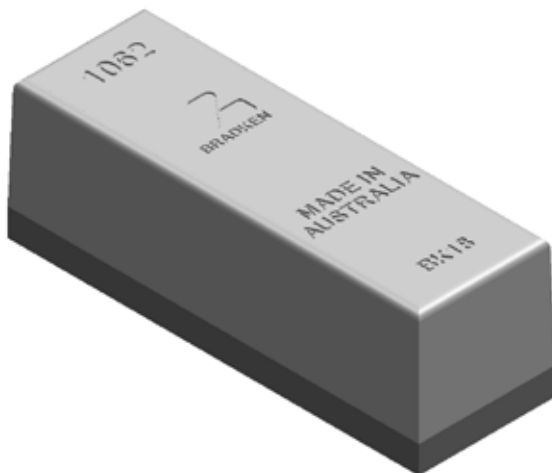


Standard Dimensions & Weights

Part Number	Reference Number	Dimensions (mm)					Weight (Kg)
		A	B	C	D	E	
BD115X50X50D70	1007	115	50	50	Dimensions available on request	2.2	
BD128X50X50D70	1080	128	50	50		2.4	
BD150X50X50D70	1062	150	50	50		2.9	
BD190X50X50D70	1081	190	50	50		3.6	
BD210X50X50D70	1082	210	50	50		4	
BD300X50X50D70	1108	300	50	50		5.8	
BD432X50X50D70	1046	432	50	50		8.3	
BD75X50X32D70	1043	75	50	32		0.9	
BD100X100X50D70	1063	100	100	50		3.9	
BD150X75X75D70	1283	150	75	75		6.4	
BD150X100X58D70	1285	150	100	58		6.7	
BD152X75X38D70	1001	152	75	38		3.4	
BD152X75X50D70	1049	152	75	50		4.5	
BD200X25X25D70	1027	200	25	25		1	
BD200X75X75D70	1200	200	75	75		8.8	
BD230X50X70D70	1143	230	50	70		6.3	
BD238X75X75D70	1282	238	75	75		10.2	
BD241X100X58D70	1284	241	100	58		10.9	
BD300X25X25D70	1083	300	25	25		1.5	
BD315X130X75D70	1114	315	130	75		23.3	
BD335X130X75D70	1115	335	130	75	24.8		
BD340X75X75D70	1281	340	75	75	14.7		
BD375X130X75D70	1201	375	130	75	27.8		
BD500X130X75D70	1116	500	130	75	37.1		
BD600X100X50D70	1244	600	100	50	23.6		

Notes

1. Please contact your local sales office for pricing and availability.
2. Other sizes can be made on request.

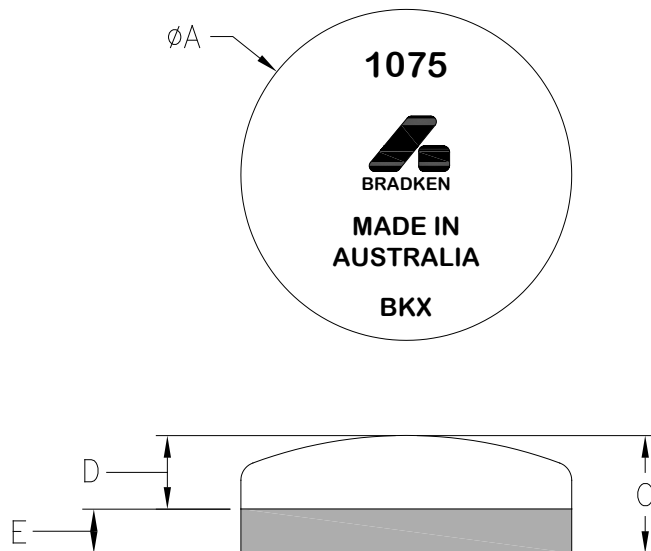


Standard Dimensions & Weights

Part Number	Reference Number	Dimensions (mm)					Weight (Kg)
		A	B	C	D	E	
BD75X27D70	1076	75	---	27	Dimensions available on request	0.8	
BD90X32D70	1075	90	---	32		1.4	
BD115X32D70	1162	115	---	32		2.2	
BD150X41D70	1163	150	---	41		4.8	

Notes

1. Please contact your local sales office for pricing and availability.
2. Other sizes can be made on request.

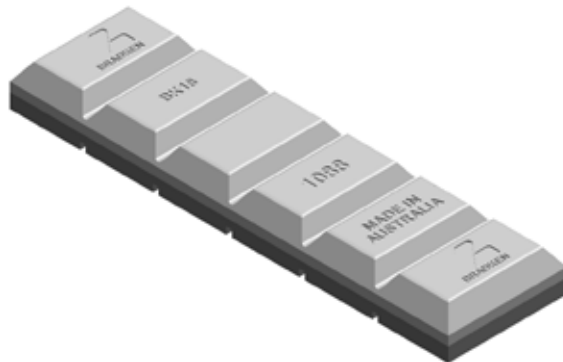
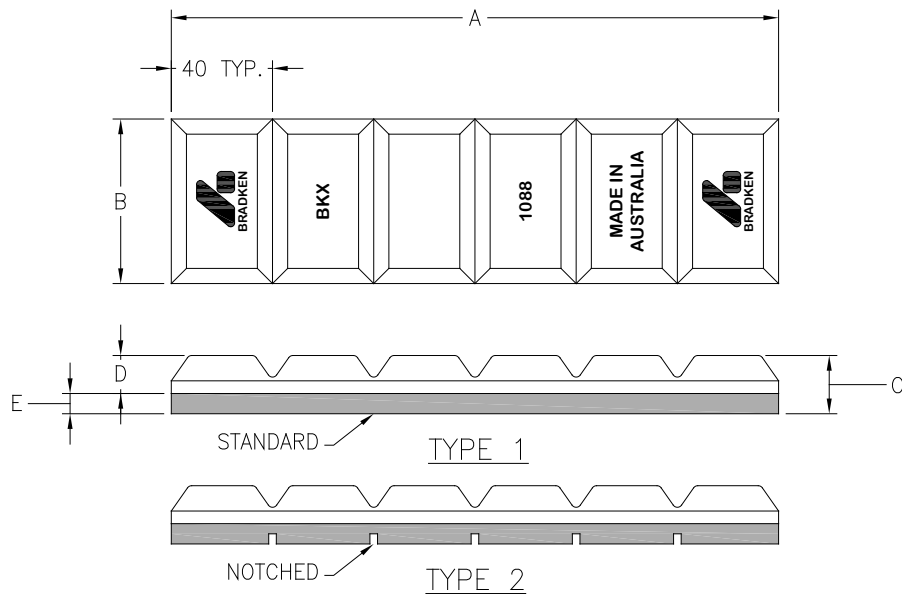


Standard Dimensions & Weights

Part Number	Reference Number	Type	Dimensions (mm)					Weight (Kg)
			A	B	C	D	E	
BD240X40X23D70	1089	1	240	40	23	Dimensions available on request	1.5	
BD240X40X23D70N	1086	2	240	40	23		1.5	
BD240X50X23D70	1090	1	240	50	23		1.9	
BD240X50X23D70N	1087	2	240	50	23		1.8	
BD240X65X23D70	1091	1	240	65	23		2.5	
BD240X65X23D70N	1088	2	240	65	23		2.4	
BD240X90X29D70N	1164	2	240	90	29		4.5	
BD240X130X29D70	1165	2	240	130	29		6.4	

Notes

1. Please contact your local sales office for pricing and availability.
2. Other sizes can be made on request.

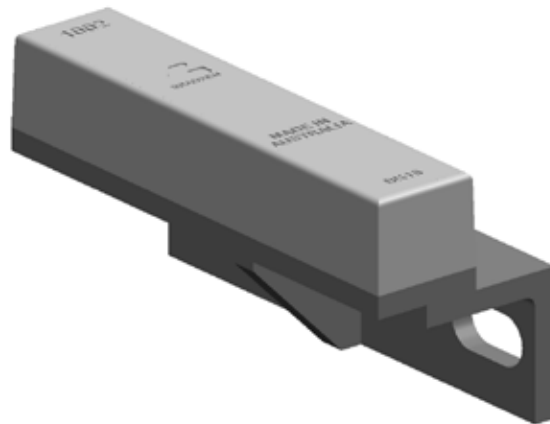
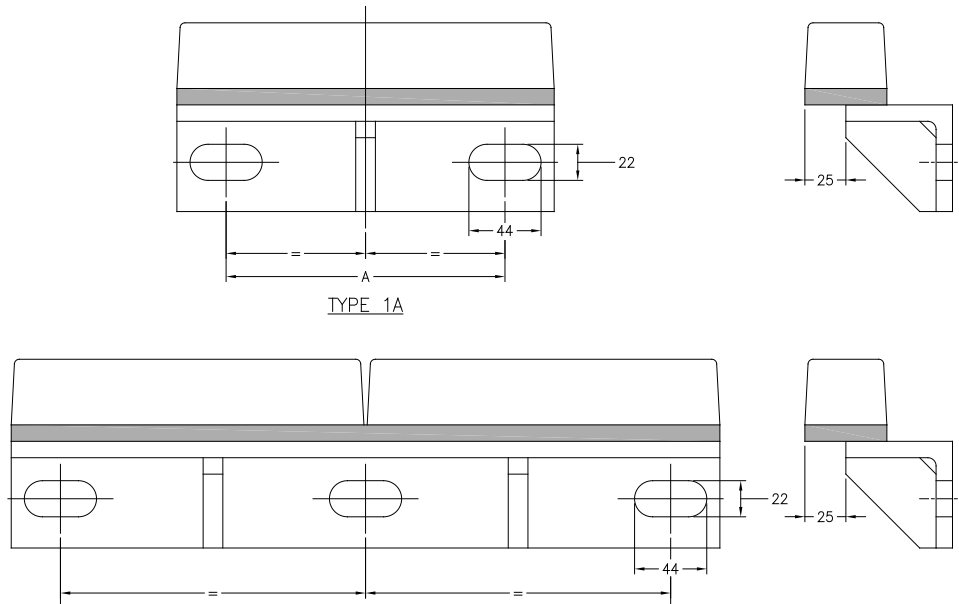


Standard Dimensions & Weights

Part Number	Reference Number	Type	Block Size	Mount Type	Dimensions A (mm)	Weight (Kg)
BD128X50X50D70BKT	1253	1A	128X50X50	128X65X65X10 ANGLE	Dimensions available on request	3.7
BD190X50X50D70BKT	1257	1A	190X50X50	190X65X65X10 ANGLE		5.4
BD210X50X50D70BKT	1260	1A	210X50X50	210X65X65X10 ANGLE		6.0
BD230X50X50D70BKT	1266	1A	230X50X50	230X65X65X10 ANGLE		6.6
BD432X50X50D70BKT	1271	1B	432X50X50	432X65X65X10 ANGLE		12.4

Notes

1. Please contact your local sales office for pricing and availability.
2. Other sizes can be made on request.

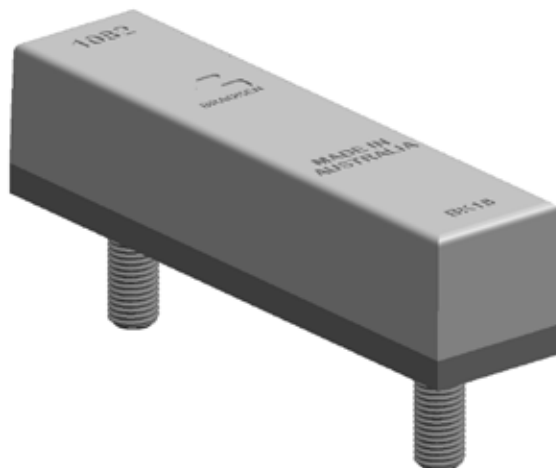
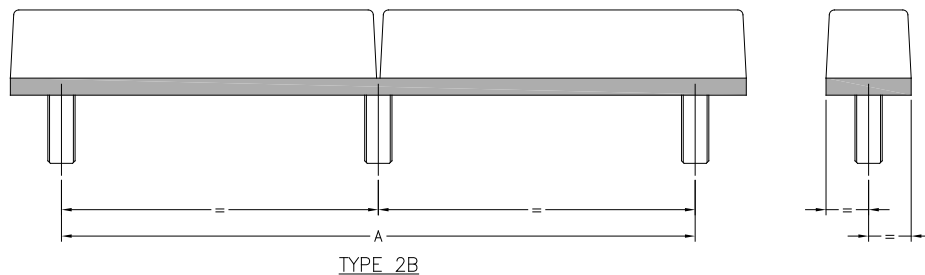
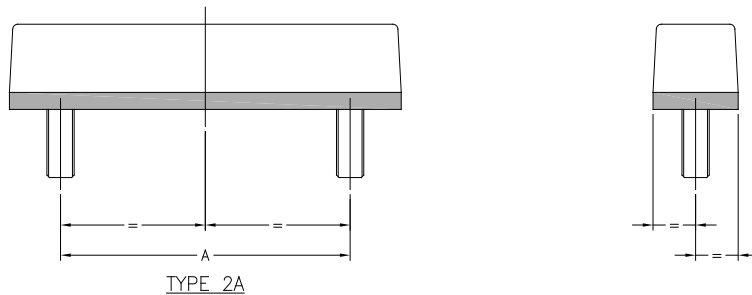


Standard Dimensions & Weights

Part Number	Reference Number	Type	Block Size	Mount Type	Dimensions A (mm)	Weight (Kg)
BD128X50X50D70STD2	1254	2A	128X50X50	M16X35mm STUDS (X2)	Dimensions available on request	2.7
BD150X75X75D70STD2	1288	2A	150X75X75	M20X50mm STUDS (X2)		6.6
BD190X50X50D70STD2	1258	2A	190X50X50	M16X35mm STUDS (X2)		3.9
BD210X50X50D70STD2	1261	2A	210X50X50	M16X35mm STUDS (X2)		4.3
BD230X50X50D70STD2	1267	2A	230X50X50	M16X35mm STUDS (X2)		4.7
BD238X75X75D70STD2	1287	2A	238X75X75	M20X50mm STUDS (X2)		10.4
BD340X75X75D70STD2	1286	2A	340X75X75	M20X50mm STUDS (X2)		14.9
BD432X50X50D70STD3	1272	2B	432X50X50	M16X35mm STUDS (X3)		8.8

Notes

1. Please contact your local sales office for pricing and availability.
2. Other sizes can be made on request.
3. Other stud sizes are available on request.

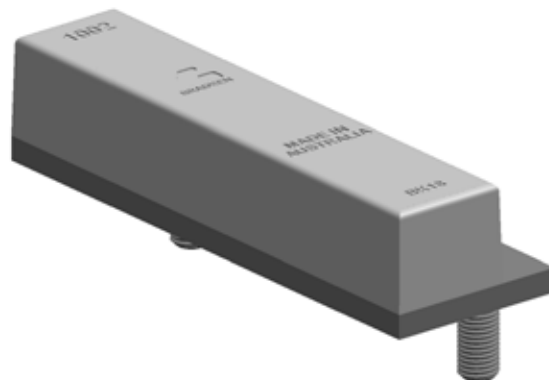
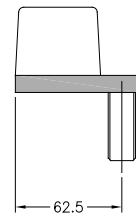
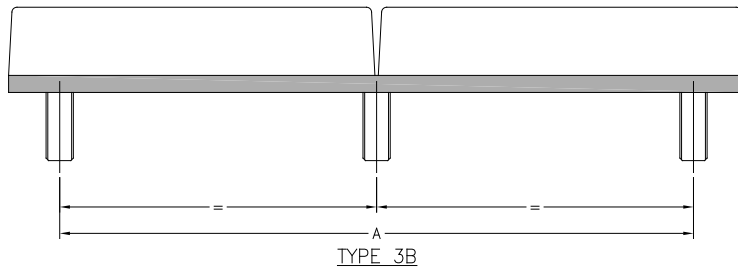
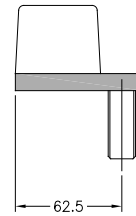
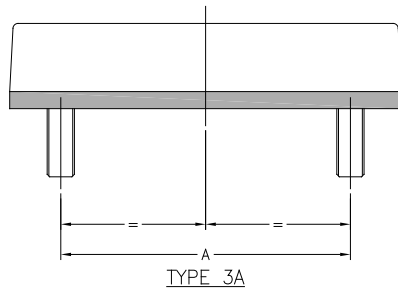


Standard Dimensions & Weights

Part Number	Reference Number	Type	Block Size	Mount Type	Dimensions A (mm)	Weight (Kg)
BD190X50(75)X50STD2	1270	3A	190X50(75)X50	M16X35mm STUDS (X2)	Dimensions available on request	4.3
BD230X50(75)X50STD2	1105	3A	230X50(75)X50	M16X35mm STUDS (X2)	Dimensions available on request	5.2
BD432X50(75)X50STD3	1475	3B	432X50(75)X50	M16X35mm STUDS (X3)	Dimensions available on request	9.6

Notes

1. Please contact your local sales office for pricing and availability.
2. Other sizes can be made on request.
3. Other stud sizes are available on request.

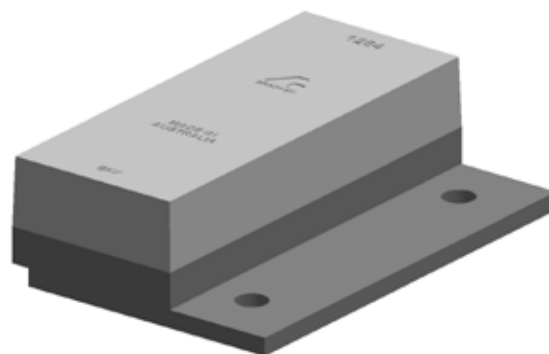
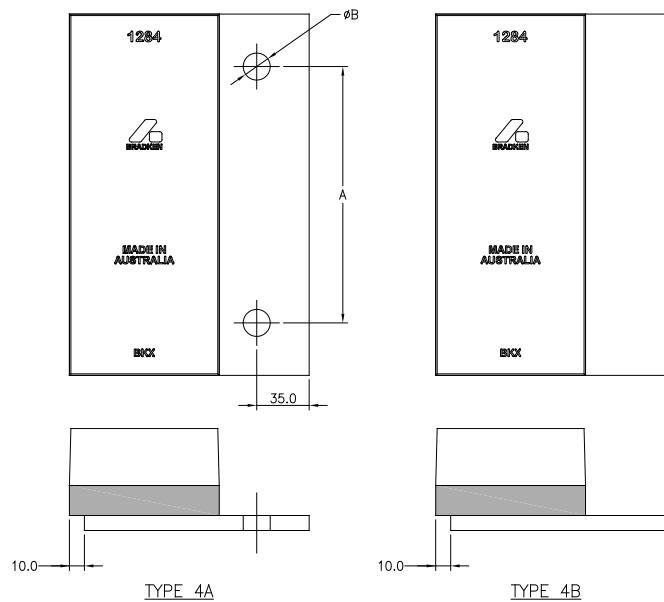


Standard Dimensions & Weights

Part Number	Reference Number	Type	Block Size	Mount Type	Dimensions A (mm)	Weight (Kg)
BD241X100X58BPL2H-1	1289	4A	241X100X58	241X150X10 PLATE	Dimensions available on request	13.7
BD241X100X58BPL	1290	4B	241X100X58	241X150X10 PLATE		13.7
BD241X100X58BPL2H	1291	4A	150X100X58	150X150X10 PLATE		8.4
BD241X100X58BPL2H-2	1292	4A	241X100X58	241X150X10 PLATE		13.7

Notes

1. Please contact your local sales office for pricing and availability.
2. Other sizes can be made on request.

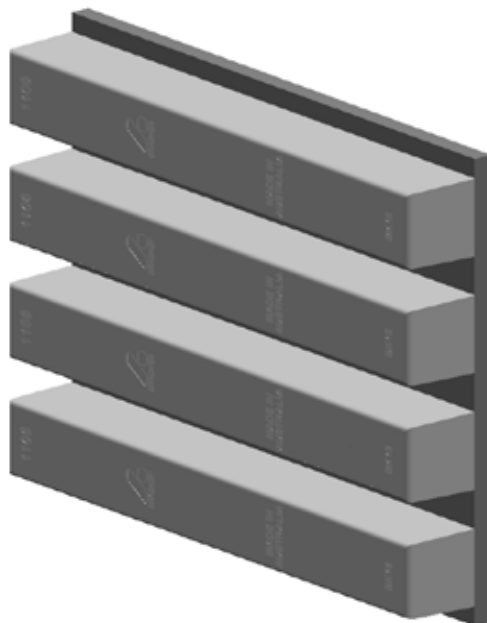
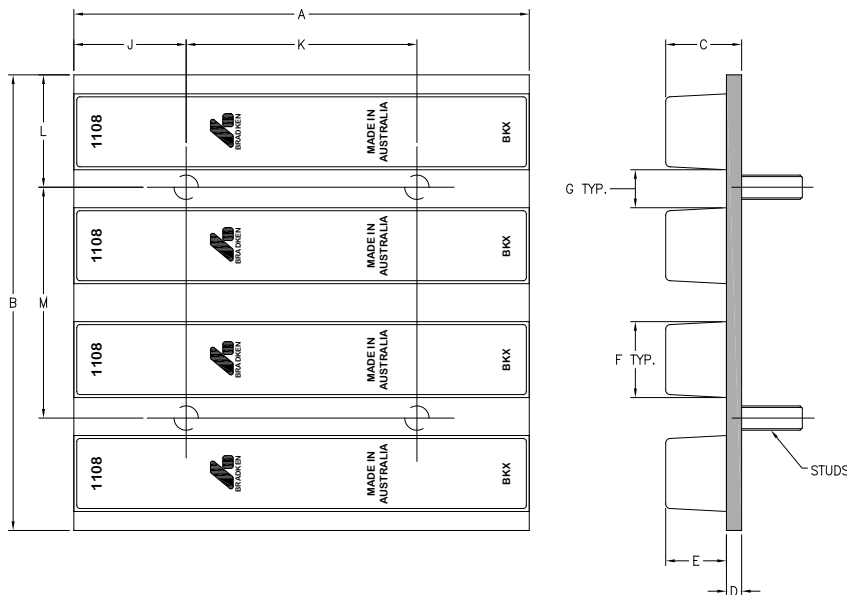


Standard Dimensions & Weights

Part Number	Reference Number	Dimensions (mm)											Studs	Weight (Kg)
		A	B	C	D	E	F	G	J	K	L	M		
BDT300X150X50STD2-1	1249	150	300	50	Dimensions available on request							M16X40 (X2)	12.9	
BDT300X300X50STD4-1	1250	300	300	50	Dimensions available on request							M16X40 (X4)	25.9	
BDT452X300X50STD4-2	1280	452	300	50	Dimensions available on request							M16X40 (X4)	38.9	

Notes

1. Please contact your local sales office for pricing and availability.
2. Other sizes can be made on request.
3. Other stud sizes are available on request.



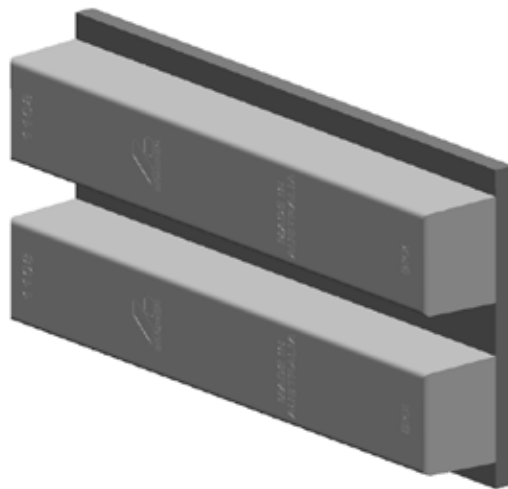
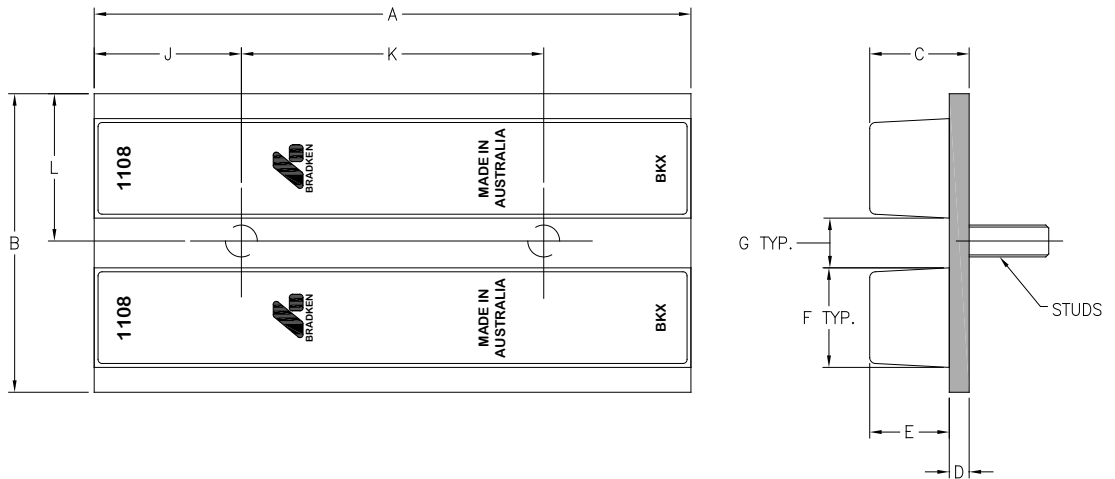


Standard Dimensions & Weights

Part Number	Reference Number	Dimensions (mm)											Studs	Weight (Kg)
		A	B	C	D	E	F	G	J	K	L	M		
BDT150X150X50STD1-1	1275	150	150	50	Dimensions available on request							M16X40 (X1)	6.5	
BDT300X150X50STD2-2	1276	300	150	50	Dimensions available on request							M16X40 (X2)	12.9	
BDT452X150X50STD2-1	1277	452	150	50	Dimensions available on request							M16X40 (X2)	19.4	

Notes

1. Please contact your local sales office for pricing and availability.
2. Other sizes can be made on request.
3. Other stud sizes are available on request.



Our Innovation. Your Advantage.

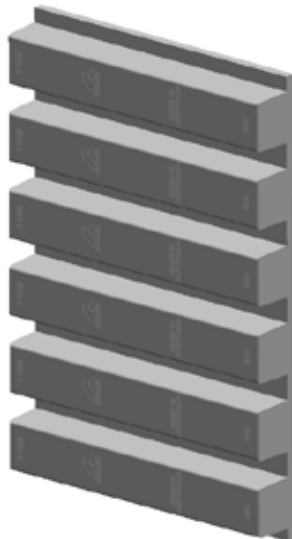
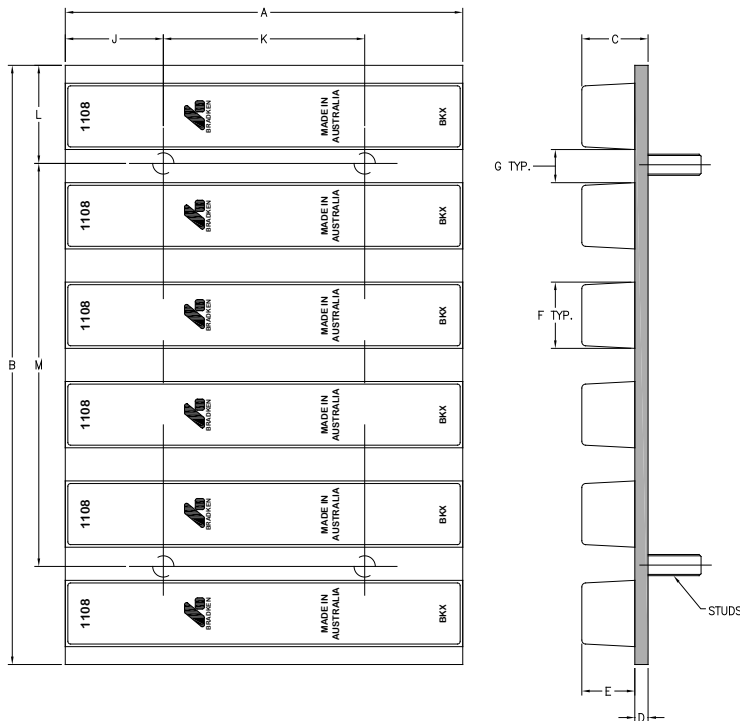


Standard Dimensions & Weights

Part Number	Reference Number	Dimensions (mm)											Studs	Weight (Kg)
		A	B	C	D	E	F	G	J	K	L	M		
BDT452X150X50STD2-2	1278	150	452	50	Dimensions available							M16X40 (X2)	19.4	
BDT452X300X50STD4-1	1279	300	452	50	on request							M16X40 (X4)	38.9	

Notes

1. Please contact your local sales office for pricing and availability.
2. Other sizes can be made on request.
3. Other stud sizes are available on request.

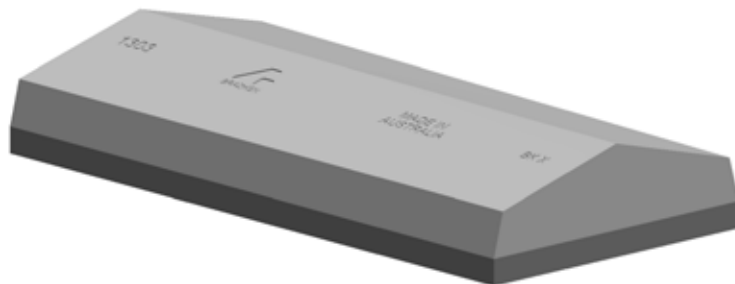
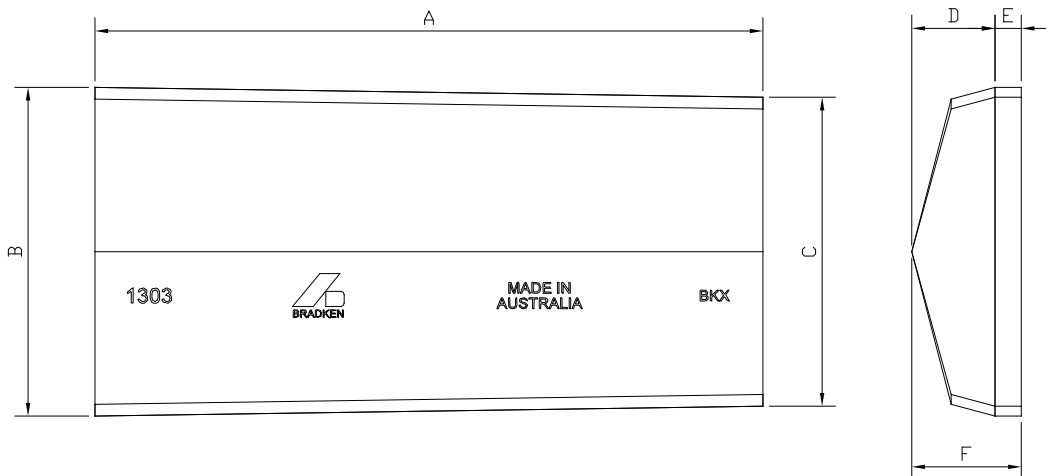


Standard Dimensions & Weights

Part Number	Reference Number	Dimensions (mm)					F	Weight (Kg)
		A	B	C	D	E		
BD305X150(141)X50D70	1303	305	150	141	Dimensions available on request	50	13.8	
BD305X141(131)X50D70	1304	305	141	131		50	12.9	
BD305X131(122)X50D70	1305	305	131	122		50	11.9	
BD305X122(113)X50D70	1306	305	122	113		50	11.1	
BD305X113(103)X50D70	1307	305	113	103		50	10.1	
BD305X103(94)X50D70	1308	305	103	94		50	9.2	
BD305X94(84)X50D70	1309	305	94	84		50	8.3	
BD305X84(75)X50D70	1310	305	84	75		50	7.4	

Notes

1. Please contact your local sales office for pricing and availability.
2. Other sizes can be made on request.

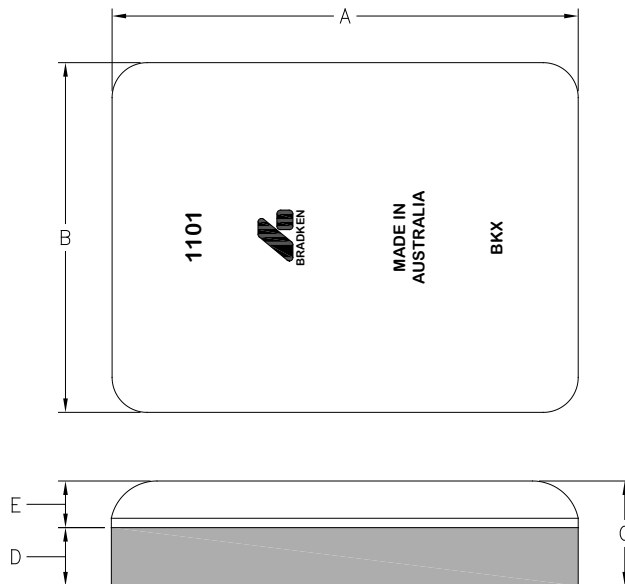


Standard Dimensions & Weights

Part Number	Reference Number	Dimensions (mm)					Weight (Kg)
		A	B	C	D	E	
BD200X150X45D70	1101	200	150	45	Dimensions		10.1
BD250X150X45D70	1102	250	150	45	available		12.7
BD250X250X45D70	1103	250	250	45	on request		21.4

Notes

1. Please contact your local sales office for pricing and availability.
2. Other sizes can be made on request.



Bradken® Offices

Adelaide, SA

80 Cromwell Road
Kilburn SA 5084
T +61 8 8262 7378
F +61 8 8262 9978

Brisbane, QLD

54 Bonemill Road
Runcorn QLD 4113
T +61 7 3345 9088
F +61 7 3344 1011

Emerald, QLD

3/23 Hospital Road
Emerald QLD 4720
T +61 7 4982 4162
F +61 7 4982 3211

Gladstone, QLD

177 Old Ten Chain Road
Calliope QLD 4680
T +61 7 4975 7354
F +61 7 4975 7836

Kalgoorlie, WA

142 Cunningham Road
Kalgoorlie WA 6430
T +61 8 9091 4855
F +61 8 9091 4866

Mackay, QLD

2 Commercial Avenue
Paget QLD 4740
T +61 7 4952 0300
F +61 7 4952 0390

Mt Isa, QLD

Lot 3, 5 Northridge Road
Northridge Industrial Estate
Mt Isa QLD 4825
T +61 7 4744 0200
F +61 7 4743 8653

Mt Thorley, NSW

Lot 58-59 Woodlands Road
Mt Thorley NSW 2330
T +61 2 6574 6699
F +61 2 6574 6709

Melbourne, VIC

32 Business Park Drive
Notting Hill VIC 3168
T +61 3 9263 1200
F +61 3 9544 4629

Newcastle, NSW

2 Maud Street
Mayfield West NSW 2304
T +61 2 4960 2050
F +61 2 4960 1826

Orange, NSW

2/87 Byng Street
South Orange NSW 2800
T +61 2 6392 2471
F +61 2 6361 3877

Perth, WA

170 Railway Parade
Bassendean WA 6054
T +61 8 9449 8300
F +61 8 9449 8334

Townsville, QLD

133-139 Dalrymple Road
Garbutt QLD 4814
T +61 7 4725 5905
F +61 7 4725 5949

Wundowie, WA

52 Hawke Avenue
Wundowie WA 6560
T +61 8 9573 6300
F +61 8 9573 6424

Port Hedland, WA

M 0438 968 508

Bradken Resources Pty Limited
ABN 82 098 300 988

Wear Plate & Block Head Office

170 Railway Parade
Bassendean WA 6054
Australia

PO Box 51
Bassendean WA 6934
Australia

T +61 8 9449 8300

F +61 8 9449 8334

E wpbsales@bradken.com.au

W bradken.com

Bradken Head Office

2 Maud Street
Mayfield West NSW 2304
Australia

PO Box 105
Waratah NSW 2298
Australia

T +61 2 4941 2600

F +61 2 4967 5003

E bradken@bradken.com.au

W bradken.com



© 2008 - Bradken®

Bradken® and Duablock® are registered trademarks of Bradken Resources Pty Limited.

(Ref: 3 BKM SP MKT Duablock Cat. - Dec 2008)