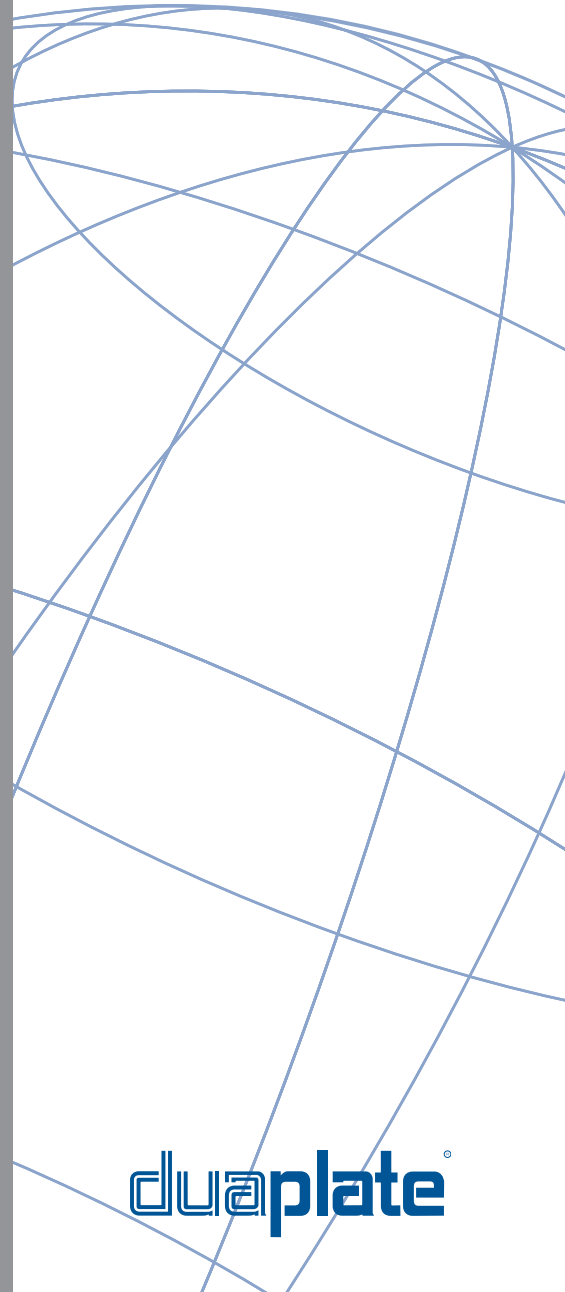


# Wear Plate & Block

Duaplate Catalogue



**Our Innovation. Your Advantage.**

**duaplate**

# duaplate®

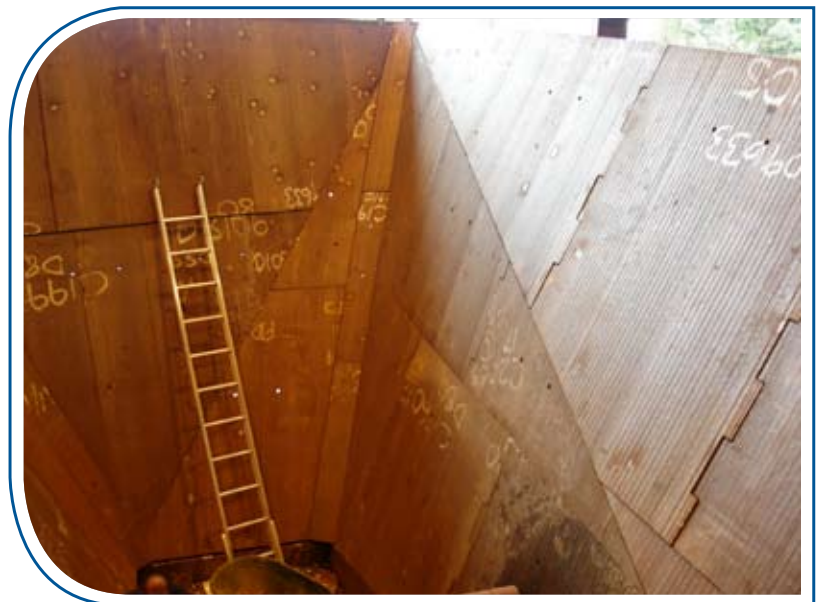
Duaplate is a chromium carbide composite cladding, that is fusion bonded to a backing material. Duaplate is renowned for being one of the most abrasive resistant surfaces available. Duaplate has been proven to outlast quench and tempered steel by up to 10 times in high abrasion and impact applications.

The standard backing material for Duaplate is AS3678-250 mild steel, however, this can be changed to suit your operating environment. The backing plate acts as a ductile base, which allows Duaplate to be formed and shaped without damage to the overlay material. The backing plate can also be used for structural support, allowing entire hoppers and chutes to be created using only Duaplate.

Duaplate is available in four different grades to suit a range of operating conditions:

- D60 - Suited for applications involving high abrasion with moderate to high impact.
- D80 - Suited for applications involving high abrasion and high impact.
- D90 - Suited for applications involving severe sliding abrasion or fine particle abrasion with low impact.
- D100/D100XP - Suited for applications requiring high abrasion resistance at elevated temperatures up to 800°C.

Duaplate can also be produced with a smooth or polished surface finish to minimise the coefficient of friction. This Duaplate smooth overlay is specifically designed to reduce material hang up and to maximise flow properties. Duaplate smooth provides a low friction solution to your bulk handling problems without the design or wear performance penalties.

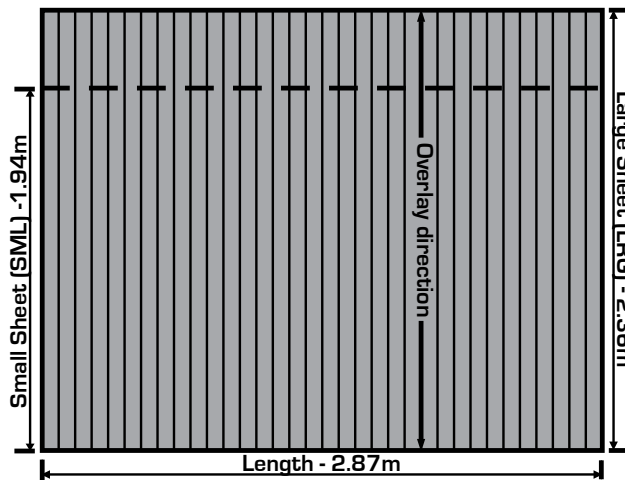


**Our Innovation. Your Advantage.**

## Standard Dimensions & Weights

Standard sheets are marked with an X

Plate Type	Grade				Overall Thickness (mm)	Weight (Kg.m <sup>2</sup> )
	D60 LRG	D80 LRG	D60 SML	D80 SML		
3 on 5					8	62
3 on 6					9	70
4 on 6	X		X		10	78
4 on 8					12	93
5 on 8	X	X	X	X	13	101
5 on 10	X		X		15	116
6 on 8	X	X			14	109
6 on 10					16	124
6 on 12					18	140
7 on 8					15	116
7 on 10					17	132
7 on 12					19	147
9 on 8	X	X			17	132
9 on 10	X	X	X	X	19	147
9 on 12	X				21	163
9 on 16					25	194
12 on 10	X				22	171
12 on 12	X		X		24	186
17 on 10	X				27	210
17 on 12	X	X			29	225



Sheet size and overlay direction

### Notes:

1. Example - Plate type 5 on 8 has 5mm Duaplate on 8mm of backing plate.
2. Non-standards plate types are made to order with a minimum quantity.
3. Overlay beads run along widths as indicated in the diagram above.
4. Sheet widths can be larger to suit customer requirements. Note this can make plates over-width for transport.
5. D90 and D100/D100XP are made to order and have some manufacturing constraints.
6. Other thicknesses can be manufactured on request.
7. Please discuss any variation from standard with your local sales representative.

# Bradken® Offices

## Adelaide, SA

80 Cromwell Road  
Kilburn SA 5084  
T +61 8 8262 7378  
F +61 8 8262 9978

## Brisbane, QLD

54 Bonemill Road  
Runcorn QLD 4113  
T +61 7 3345 9088  
F +61 7 3344 1011

## Emerald, QLD

3/23 Hospital Road  
Emerald QLD 4720  
T +61 7 4982 4162  
F +61 7 4982 3211

## Gladstone, QLD

177 Old Ten Chain Road  
Calliope QLD 4680  
T +61 7 4975 7354  
F +61 7 4975 7836

## Kalgoorlie, WA

142 Cunningham Road  
Kalgoorlie WA 6430  
T +61 8 9091 4855  
F +61 8 9091 4866

## Mackay, QLD

2 Commercial Avenue  
Paget QLD 4740  
T +61 7 4952 0300  
F +61 7 4952 0390

## Mt Isa, QLD

Lot 3, 5 Northridge Road  
Northridge Industrial Estate  
Mt Isa QLD 4825  
T +61 7 4744 0200  
F +61 7 4743 8653

## Mt Thorley, NSW

Lot 58-59 Woodlands Road  
Mt Thorley NSW 2330  
T +61 2 6574 6699  
F +61 2 6574 6709

## Melbourne, VIC

32 Business Park Drive  
Notting Hill VIC 3168  
T +61 3 9263 1200  
F +61 3 9544 4629

## Newcastle, NSW

2 Maud Street  
Mayfield West NSW 2304  
T +61 2 4960 2050  
F +61 2 4960 1826

## Orange, NSW

2/87 Byng Street  
South Orange NSW 2800  
T +61 2 6392 2471  
F +61 2 6361 3877

## Perth, WA

170 Railway Parade  
Bassendean WA 6054  
T +61 8 9449 8300  
F +61 8 9449 8334

## Townsville, QLD

133-139 Dalrymple Road  
Garbutt QLD 4814  
T +61 7 4725 5905  
F +61 7 4725 5949

## Wundowie, WA

52 Hawke Avenue  
Wundowie WA 6560  
T +61 8 9573 6300  
F +61 8 9573 6424

## Port Hedland, WA

M 0438 968 508

**Bradken Resources Pty Limited**  
ABN 82 098 300 988

## Wear Plate & Block Head Office

170 Railway Parade  
Bassendean WA 6054  
Australia

PO Box 51  
Bassendean WA 6934  
Australia

T +61 8 9449 8300

F +61 8 9449 8334

E [wpbsales@bradken.com.au](mailto:wpbsales@bradken.com.au)

W [bradken.com](http://bradken.com)

## Bradken Head Office

2 Maud Street  
Mayfield West NSW 2304  
Australia

PO Box 105  
Waratah NSW 2298  
Australia

T +61 2 4941 2600

F +61 2 4967 5003

E [bradken@bradken.com.au](mailto:bradken@bradken.com.au)

W [bradken.com](http://bradken.com)



© 2008 - Bradken®

Bradken® and Duaplate® are registered trademarks of Bradken Resources Pty Limited.

(Ref: 3 BKM SP MKT Duaplate Cat. - Dec 2008)