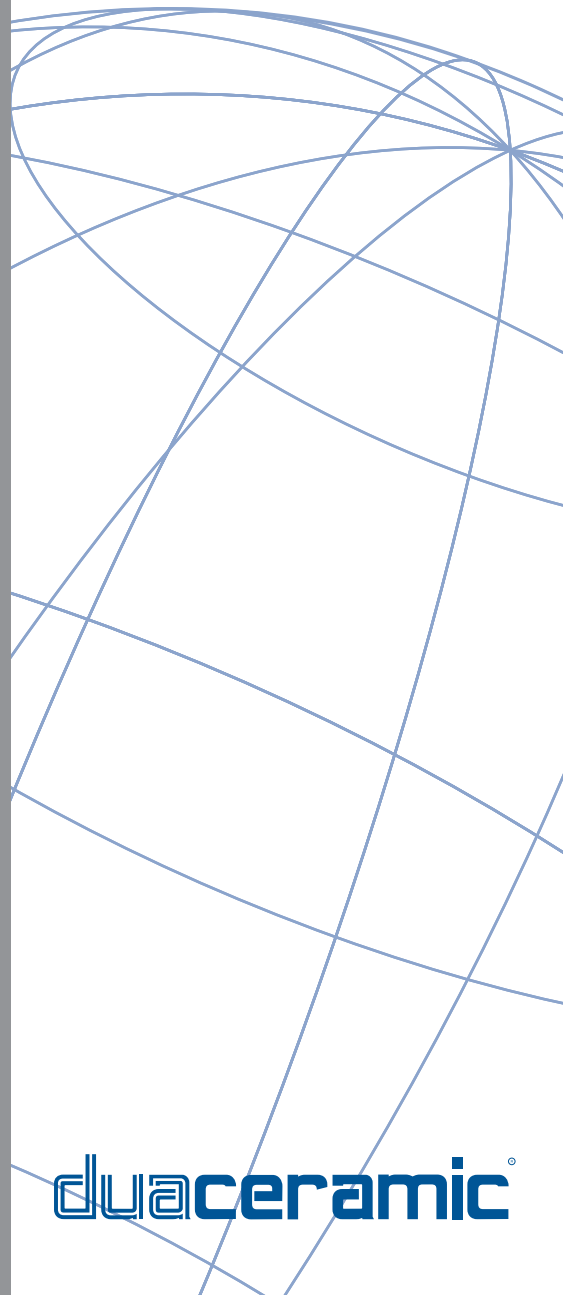
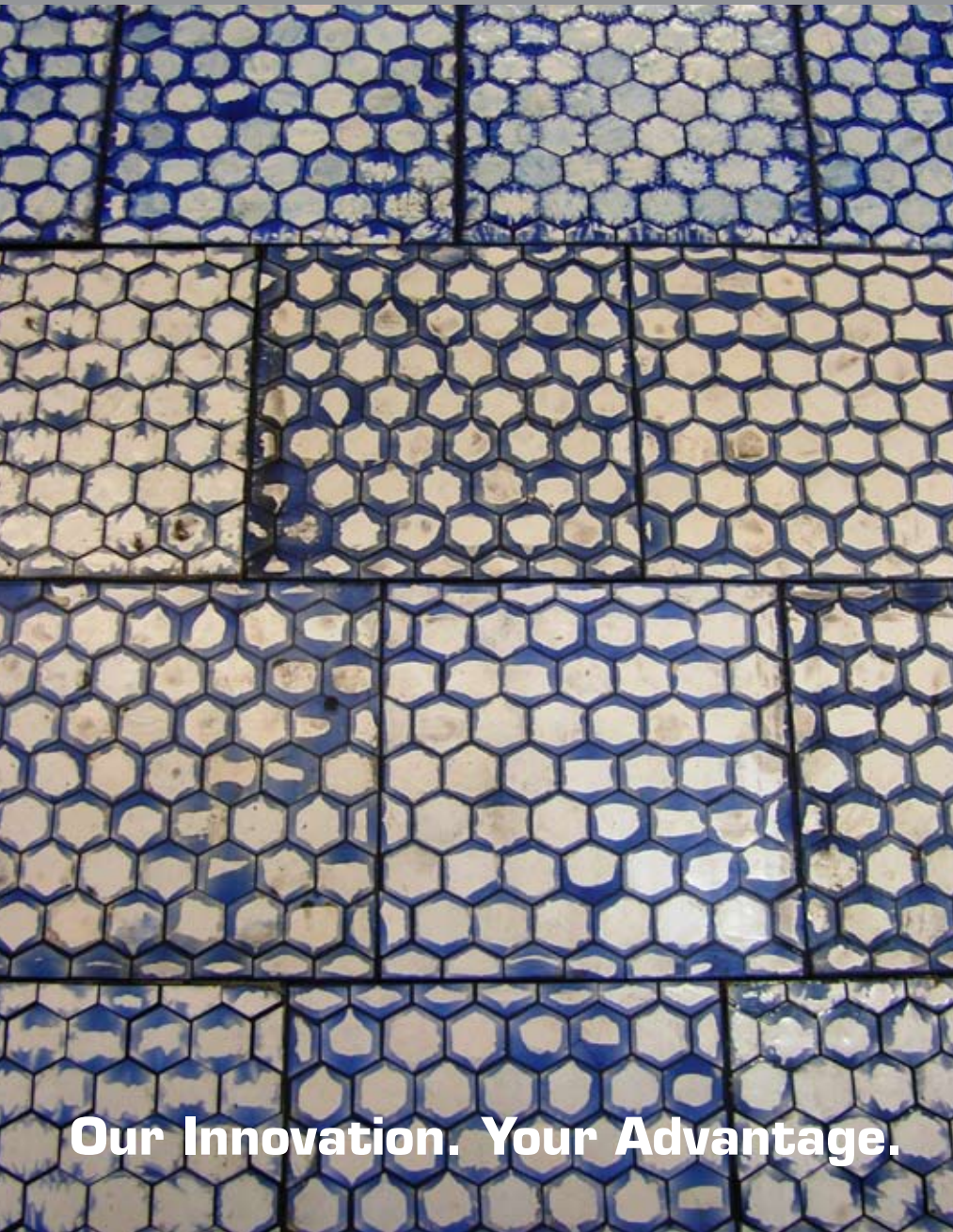


Wear Plate & Block

Duac ceramic Catalogue



Our Innovation. Your Advantage.

duac ceramic®

duaceramic[®]

Duaceramic is a new product developed and manufactured in Australia by Bradken. Duaceramic combines exceptionally abrasion resistant alumina tiles, imbedded in an impact resistant polyurethane elastomer, to provide an outstanding wear resistant product.

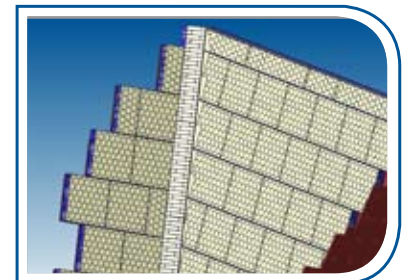
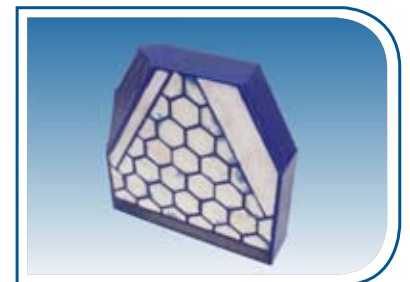
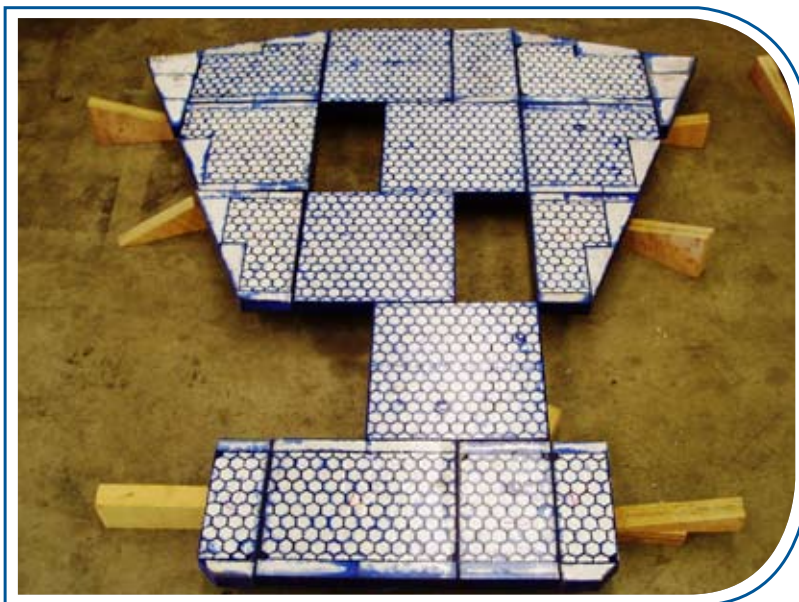
The extremely hard ceramic tiles protect equipment from deterioration, whilst the elastic properties of the polyurethane dampens any impact. Several different modular alumina tile designs are available that are suited for different applications. The hardness of the polyurethane is also available in multiple grades to suit specific material and operating conditions.

As one of the hardest materials known, alumina is far superior to steel plate when it comes to protection against abrasion. The Duaceramic range of products are specifically designed to protect against the most extreme abrasive environments.

Complementary Products & Services

In addition to our Duaceramic liners, Bradken can also provide:

- Wear package design services
- Polyurethane impact liners
- Ceramic to metal fabrications



Our Innovation. Your Advantage.

Corrosion Resistance

The table below is a guide for the compatibility of Duaceramic with common industrial chemicals.

Chemical	Duaceramic	Ceramic	Polyurethane
Acetic Acid	C	A	C
Acetone	X	A	X
Ammonium Hydroxide	A	A	A
Ammonium Nitrate	X	A	X
Ammonium Persulfate	X	A	X
Barium Chloride	A	A	A
Barium Hydroxide	A	A	A
Barium Sulfate	A	A	A
Barium Sulfide	A	A	A
Boric Acid	A	A	A
Calcium Chloride	A	A	A
Calcium Hydroxide	A	A	A
Calcium Nitrate	A	A	A
Calcium Sulfate	A	A	A
Carbon Dioxide (wet)	A	A	A
Copper Chloride	A	A	A
Copper Cyanide	A	A	A
Copper Sulfate 5%	A	A	A
Cyclohexanone	B	A	B
Freon 113	B	A	B
Gasoline	A	A	A
Glycerin	A	A	A
Hydrochloric Acid	X	C	X
Kerosene	B	A	B
Magnesium Chloride	A	A	A
Magnesium Hydroxide	A	A	A
Mercury	A	A	A
Nickel Sulfate	A	A	A
Nitric Acid (Concentrated)	X	A	X
Oleic Acid	B	A	B
Potassium Cyanide Solutions	X	X	A
Potassium Dichromate	B	B	A
Potassium Nitrate	B	B	A
Potassium Sulfate	A	A	A
Soap Solutions	A	A	A
Sodium Chloride	A	A	A
Sodium Hydroxide (20%)	B	A	B
Sodium Sulfate	A	A	A
Sulfuric Acid (10-75%)	B	A	B
Sulfuric Acid (75-100%)	X	A	X
Tannic Acid	A	A	A
Tartaric Acid	A	A	A
Toluene	C	A	C

Key: A - Minor or no effect
B - Minor to moderate effect

C - Moderate to severe effect
X - Not recommended

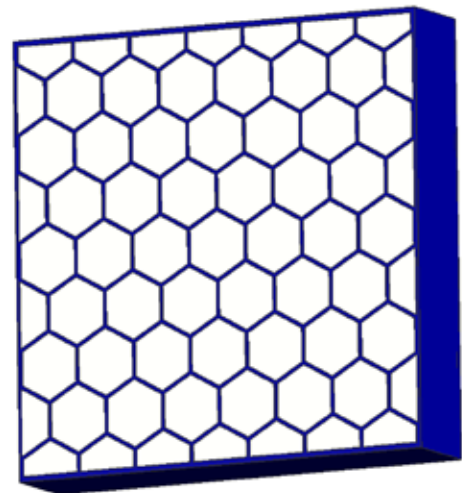
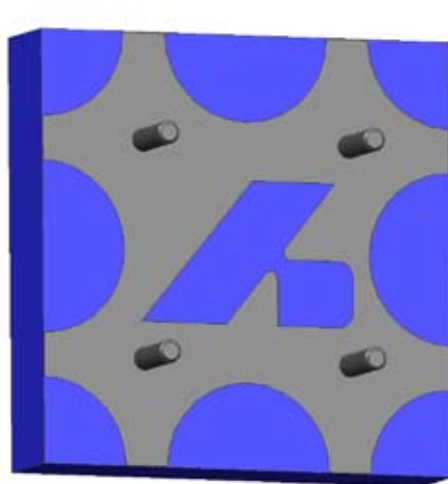
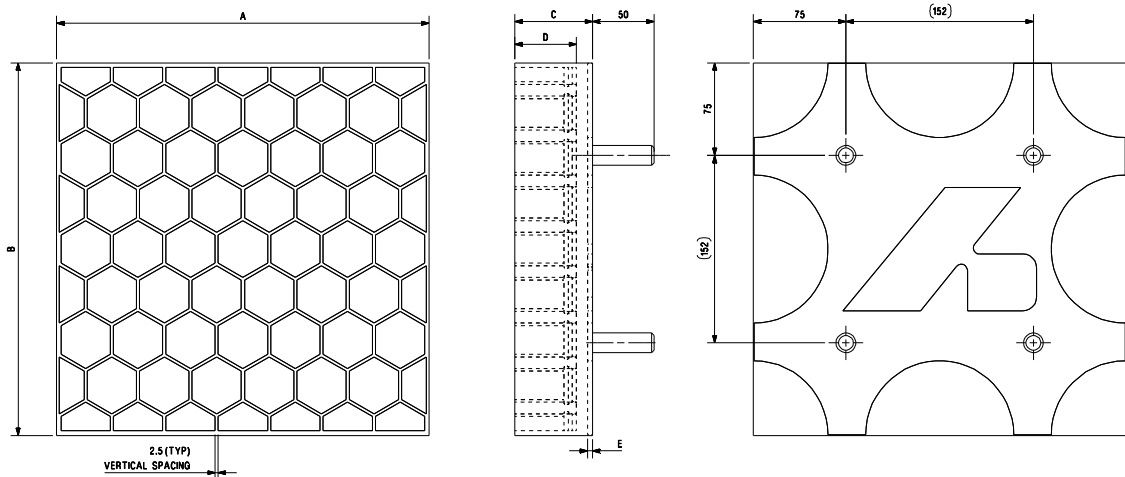
Standard Dimensions & Weights

Hex liners with backing plates

Part Number	Type	Dimensions (mm)					Studs	Weight (Kg)
		A (+0/-2)	B (+0/-2)	C (±1)	D (±1)	E		
H1-63BP	LRG HEX	606	302	63	50	4	M16x50 (x8)	35.2
H2-63BP	LRG HEX	302	302	63	50	4	M16x50 (x4)	17.1
H3-63BP	LRG HEX	150	302	63	50	4	M16x50 (x2)	8.6
H1-53BP	LRG HEX	606	302	53	40	4	M16x50 (x8)	28.7
H2-53BP	LRG HEX	302	302	53	40	4	M16x50 (x4)	14.2
H3-53BP	LRG HEX	150	302	53	40	4	M16x50 (x2)	7.2
H1-35BP	SML HEX	606	302	35	22	4	M16x50 (x8)	17.4
H2-35BP	SML HEX	302	302	35	22	4	M16x50 (x4)	8.5
H3-35BP	SML HEX	150	302	35	22	4	M16x50 (x2)	4.4

Notes

1. Please contact your local sales office for pricing and availability.
2. Other sizes and custom shapes can be made on request.
3. Other stud sizes are available on request.



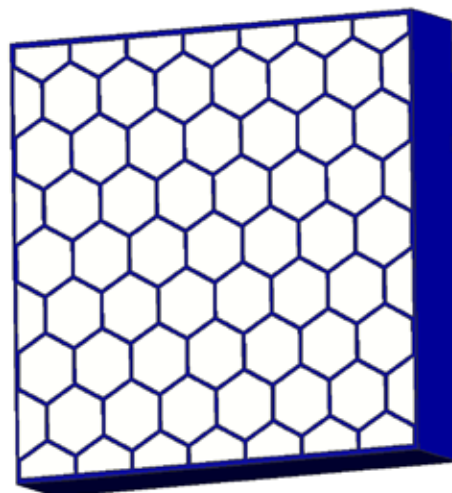
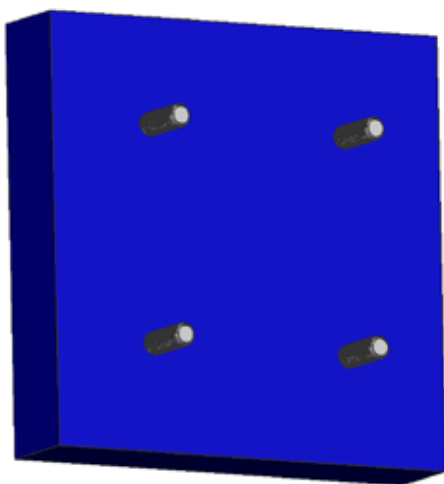
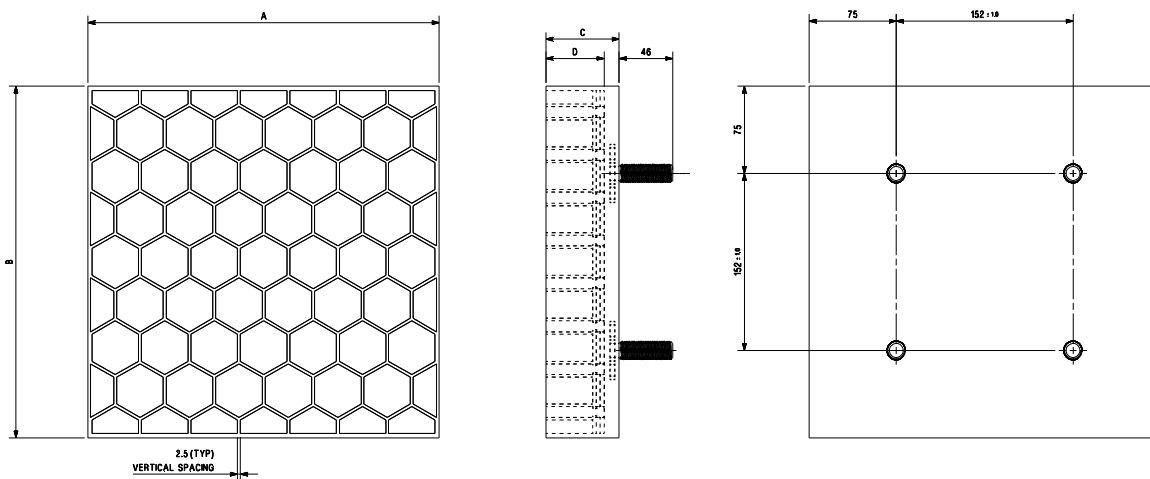
Standard Dimensions & Weights

Hex liners without backing plates

Part Number	Type	Dimensions (mm)					Studs	Weight (Kg)
		A (+0/-2)	B (+0/-2)	C (±1)	D (±1)	E		
H1-63	LRG HEX	606	302	63	50	-	M16x50 (x8)	32.5
H2-63	LRG HEX	302	302	63	50	-	M16x50 (x4)	15.9
H3-63	LRG HEX	150	302	63	50	-	M16x50 (x2)	8.0
H1-50	LRG HEX	606	302	50	40	-	M16x50 (x8)	25.2
H2-50	LRG HEX	302	302	50	40	-	M16x50 (x4)	12.7
H3-50	LRG HEX	150	302	50	40	-	M16x50 (x2)	6.4
H1-32	SML HEX	606	302	32	22	-	M16x50 (x8)	14.0
H2-32	SML HEX	302	302	32	22	-	M16x50 (x4)	7.1
H3-32	SML HEX	150	302	32	22	-	M16x50 (x2)	3.5

Notes

1. Please contact your local sales office for pricing and availability.
2. Other sizes and custom shapes can be made on request.
3. Other stud sizes are available on request.



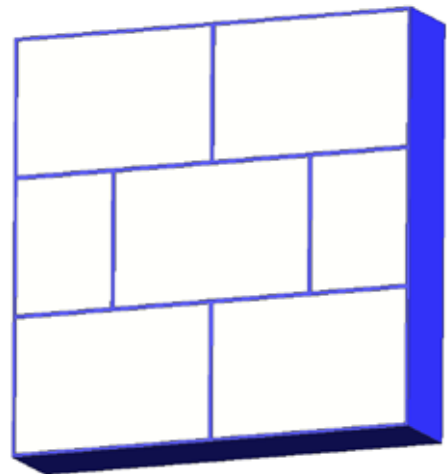
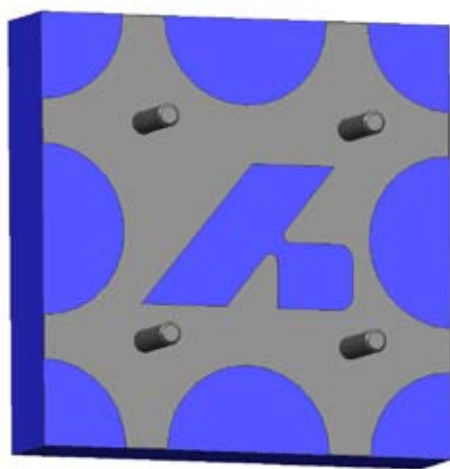
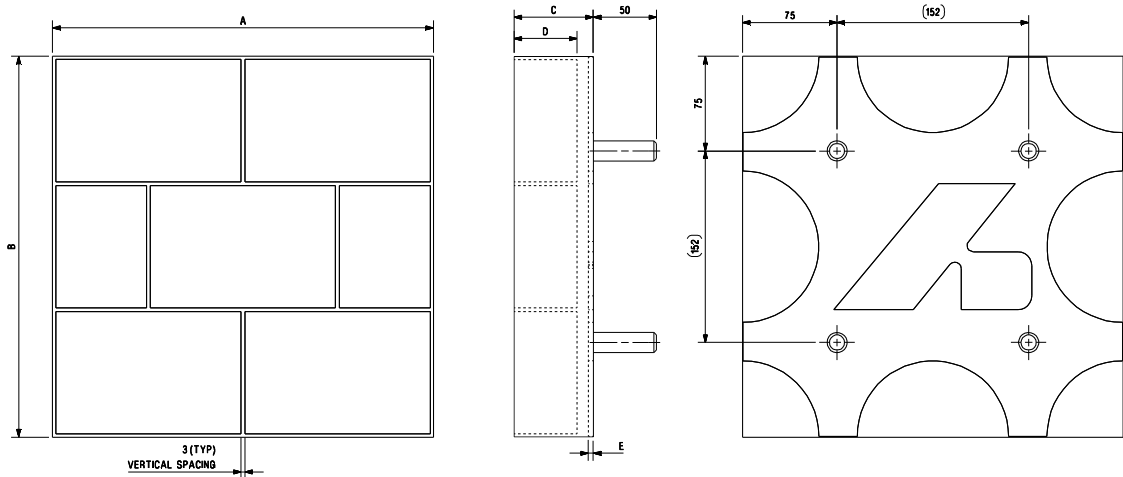
Standard Dimensions & Weights

Tile liners with backing plates

Part Number	Type	Dimensions (mm)					Studs	Weight (Kg)
		A (+0/-2)	B (+0/-2)	C (±1)	D (±1)	E		
T1-63BP	TILE	606	302	63	50	4	M16x50 (x8)	36.2
T2-63BP	TILE	302	302	63	50	4	M16x50 (x4)	17.9
T3-63BP	TILE	150	302	63	50	4	M16x50 (x2)	9.0

Notes

1. Please contact your local sales office for pricing and availability.
2. Other sizes and custom shapes can be made on request.
3. Other stud sizes are available on request.



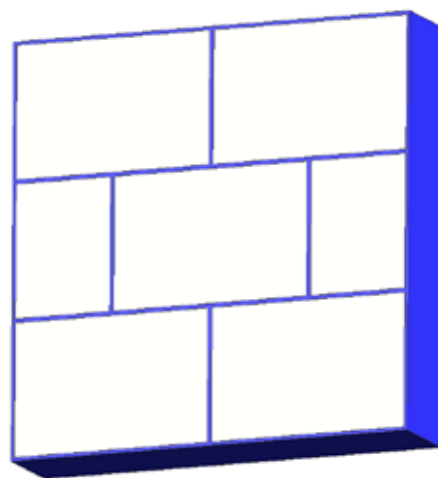
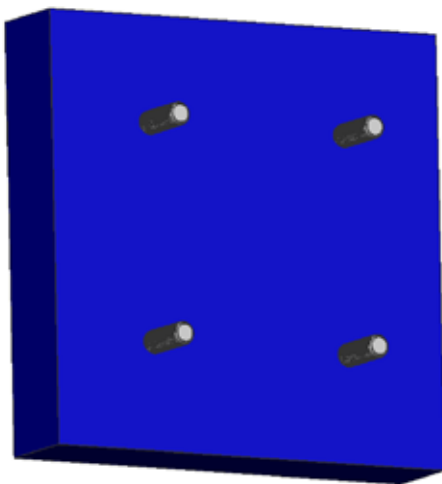
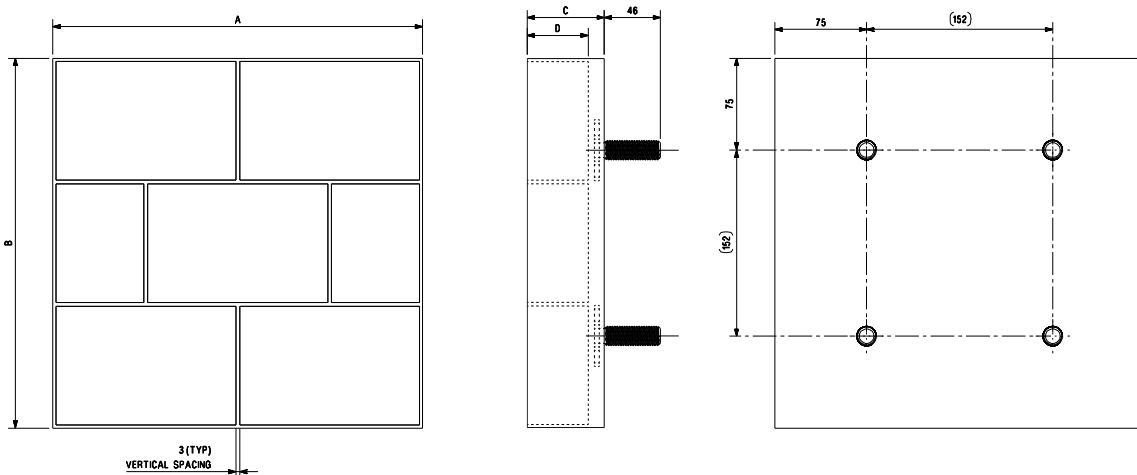
Standard Dimensions & Weights

Tile liners without backing plates

Part Number	Type	Dimensions (mm)					Studs	Weight (Kg)
		A (+0/-2)	B (+0/-2)	C (±1)	D (±1)	E		
T1-63	TILE	606	302	63	50	-	M16x50 (x8)	33.2
T2-63	TILE	302	302	63	50	-	M16x50 (x4)	16.7
T3-63	TILE	150	302	63	50	-	M16x50 (x2)	8.3

Notes

1. Please contact your local sales office for pricing and availability.
2. Other sizes and custom shapes can be made on request.
3. Other stud sizes are available on request.



Bradken® Offices

Adelaide, SA

80 Cromwell Road
Kilburn SA 5084
T +61 8 8262 7378
F +61 8 8262 9978

Brisbane, QLD

54 Bonemill Road
Runcorn QLD 4113
T +61 7 3345 9088
F +61 7 3344 1011

Emerald, QLD

3/23 Hospital Road
Emerald QLD 4720
T +61 7 4982 4162
F +61 7 4982 3211

Gladstone, QLD

177 Old Ten Chain Road
Calliope QLD 4680
T +61 7 4975 7354
F +61 7 4975 7836

Kalgoorlie, WA

142 Cunningham Road
Kalgoorlie WA 6430
T +61 8 9091 4855
F +61 8 9091 4866

Mackay, QLD

2 Commercial Avenue
Paget QLD 4740
T +61 7 4952 0300
F +61 7 4952 0390

Mt Isa, QLD

Lot 3, 5 Northridge Road
Northridge Industrial Estate
Mt Isa QLD 4825
T +61 7 4744 0200
F +61 7 4743 8653

Mt Thorley, NSW

Lot 58-59 Woodlands Road
Mt Thorley NSW 2330
T +61 2 6574 6699
F +61 2 6574 6709

Melbourne, VIC

32 Business Park Drive
Notting Hill VIC 3168
T +61 3 9263 1200
F +61 3 9544 4629

Newcastle, NSW

2 Maud Street
Mayfield West NSW 2304
T +61 2 4960 2050
F +61 2 4960 1826

Orange, NSW

2/87 Byng Street
South Orange NSW 2800
T +61 2 6392 2471
F +61 2 6361 3877

Perth, WA

170 Railway Parade
Bassendean WA 6054
T +61 8 9449 8300
F +61 8 9449 8334

Townsville, QLD

133-139 Dalrymple Road
Garbutt QLD 4814
T +61 7 4725 5905
F +61 7 4725 5949

Wundowie, WA

52 Hawke Avenue
Wundowie WA 6560
T +61 8 9573 6300
F +61 8 9573 6424

Port Hedland, WA

M 0438 968 508

Bradken Resources Pty Limited
ABN 82 098 300 988

Wear Plate & Block Head Office

170 Railway Parade
Bassendean WA 6054
Australia

PO Box 51
Bassendean WA 6934
Australia

T +61 8 9449 8300

F +61 8 9449 8334

E wpbsales@bradken.com.au

W bradken.com

Bradken Head Office

2 Maud Street
Mayfield West NSW 2304
Australia

PO Box 105
Waratah NSW 2298
Australia

T +61 2 4941 2600

F +61 2 4967 5003

E bradken@bradken.com.au

W bradken.com



© 2008 - Bradken®

Bradken® and Duaceramic® are registered trademarks of Bradken Resources Pty Limited.

(Ref: 3 BKM SP MKT Duaceramic Cat. - Dec 2008)