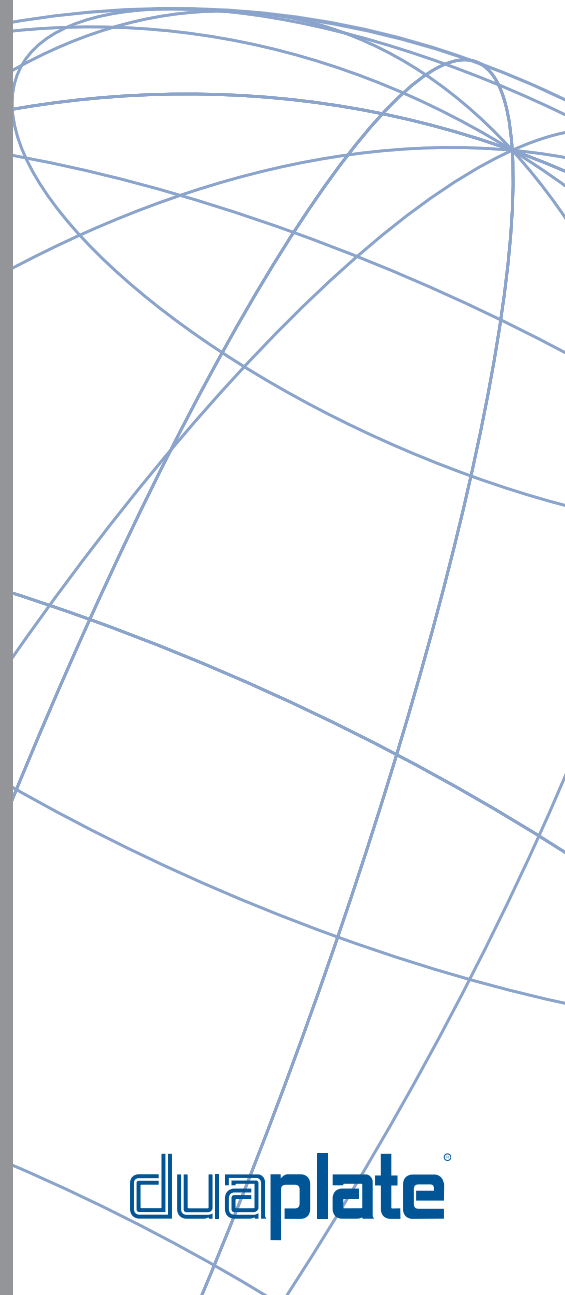


Wear Plate & Block

Duaplate Catalogue



Our Innovation. Your Advantage.

duaplate

duaplate[®]

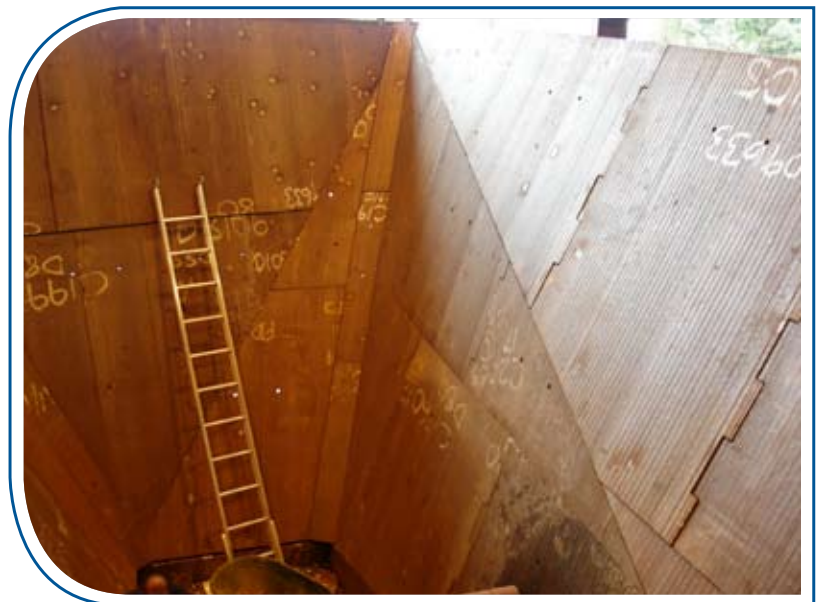
Duaplate is a chromium carbide composite cladding, that is fusion bonded to a backing material. Duaplate is renowned for being one of the most abrasive resistant surfaces available. Duaplate has been proven to outlast quench and tempered steel by up to 10 times in high abrasion and impact applications.

The standard backing material for Duaplate is AS3678-250 mild steel, however, this can be changed to suit your operating environment. The backing plate acts as a ductile base, which allows Duaplate to be formed and shaped without damage to the overlay material. The backing plate can also be used for structural support, allowing entire hoppers and chutes to be created using only Duaplate.

Duaplate is available in four different grades to suit a range of operating conditions:

- D60 - Suited for applications involving high abrasion with moderate to high impact.
- D80 - Suited for applications involving high abrasion and high impact.
- D90 - Suited for applications involving severe sliding abrasion or fine particle abrasion with low impact.
- D100/D100XP - Suited for applications requiring high abrasion resistance at elevated temperatures up to 800°C.

Duaplate can also be produced with a smooth or polished surface finish to minimise the coefficient of friction. This Duaplate smooth overlay is specifically designed to reduce material hang up and to maximise flow properties. Duaplate smooth provides a low friction solution to your bulk handling problems without the design or wear performance penalties.



Our Innovation. Your Advantage.

Standard Dimensions & Weights

Standard sheets are marked with an X

Plate Type	Grade				Overall Thickness (mm)	Weight (Kg.m ²)
	D60 LRG	D80 LRG	D60 SML	D80 SML		
3 on 5					8	62
3 on 6	X				9	70
4 on 6	X	X	X		10	78
5 on 8	X	X			13	101
5 on 10	X				15	116
5 on 12	X				17	132
6 on 8	X	X			14	109
6 on 10	X	X			16	124
6 on 12					18	140
7 on 8	X				15	116
7 on 10	X				17	132
7 on 12	X				19	147
9 on 8	X	X			17	132
9 on 10	X	X			19	147
9 on 12	X	X			21	163
12 on 8	X				25	194
12 on 10	X	X			22	171
12 on 12	X	X			24	186
12 on 16	X				28	217
17 on 10	X				27	210
17 on 12	X	X			29	225

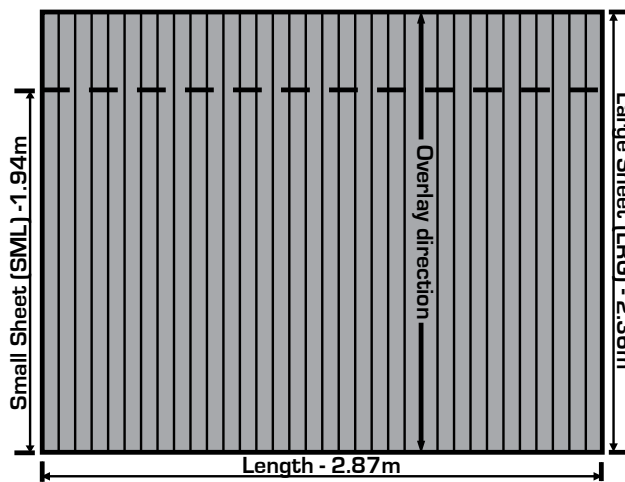


Figure 1: Sheet sizes and overlay direction

Notes:

1. Example - Plate type 5 on 8 has 5mm Duaplate overlay on 8mm of backing plate.
2. Non-standard sheets and plate types are made to order with a minimum quantity.
3. Overlay beads run along the plate width as indicated in figure 1 above.
4. Sheet widths can be larger to suit customer requirements. Note that this can make plates over-width for transport.
5. D90 and D100/D100XP are made to order and have some manufacturing constraints.
6. Please discuss any variation from standard with your local sales representative.

Bradken® Offices

Adelaide, SA

80 Cromwell Road
Kilburn SA 5084
T +61 8 8262 7378
F +61 8 8262 9978

Brisbane, QLD

54 Bonemill Road
Runcorn QLD 4113
T +61 7 3345 9088
F +61 7 3344 1011

Emerald, QLD

3/23 Hospital Road
Emerald QLD 4720
T +61 7 4982 4162
F +61 7 4982 3211

Gladstone, QLD

177 Old Ten Chain Road
Calliope QLD 4680
T +61 7 4975 7354
F +61 7 4975 7836

Kalgoorlie, WA

142 Cunningham Road
Kalgoorlie WA 6430
T +61 8 9091 4855
F +61 8 9091 4866

Mackay, QLD

2 Commercial Avenue
Paget QLD 4740
T +61 7 4952 0300
F +61 7 4952 0390

Mt Isa, QLD

Lot 3, 5 Northridge Road
Northridge Industrial Estate
Mt Isa QLD 4825
T +61 7 4744 0200
F +61 7 4743 8653

Mt Thorley, NSW

Lot 58-59 Woodlands Road
Mt Thorley NSW 2330
T +61 2 6574 6699
F +61 2 6574 6709

Melbourne, VIC

32 Business Park Drive
Notting Hill VIC 3168
T +61 3 9263 1200
F +61 3 9544 4629

Newcastle, NSW

2 Maud Street
Mayfield West NSW 2304
T +61 2 4960 2050
F +61 2 4960 1826

Orange, NSW

2/87 Byng Street
South Orange NSW 2800
T +61 2 6392 2471
F +61 2 6361 3877

Perth, WA

170 Railway Parade
Bassendean WA 6054
T +61 8 9449 8300
F +61 8 9449 8334

Townsville, QLD

133-139 Dalrymple Road
Garbutt QLD 4814
T +61 7 4725 5905
F +61 7 4725 5949

Wundowie, WA

52 Hawke Avenue
Wundowie WA 6560
T +61 8 9573 6300
F +61 8 9573 6424

Port Hedland, WA

M 0438 968 508

Bradken Resources Pty Limited

ABN 82 098 300 988

Wear Plate & Block Head Office

170 Railway Parade
Bassendean WA 6054
Australia

PO Box 51

Bassendean WA 6934
Australia

T +61 8 9449 8300

F +61 8 9449 8334

E wpbsales@bradken.com

W bradken.com

Bradken Head Office

2 Maud Street
Mayfield West NSW 2304
Australia

PO Box 105

Waratah NSW 2298

Australia

T +61 2 4941 2600

F +61 2 4967 5003

E bradken@bradken.com

W bradken.com



© 2009 - Bradken®

Bradken® and Duaplate® are registered trademarks of Bradken Resources Pty Limited.

(Ref: 3 BKM SP MKT Duaplate Cat. - Dec 2009)